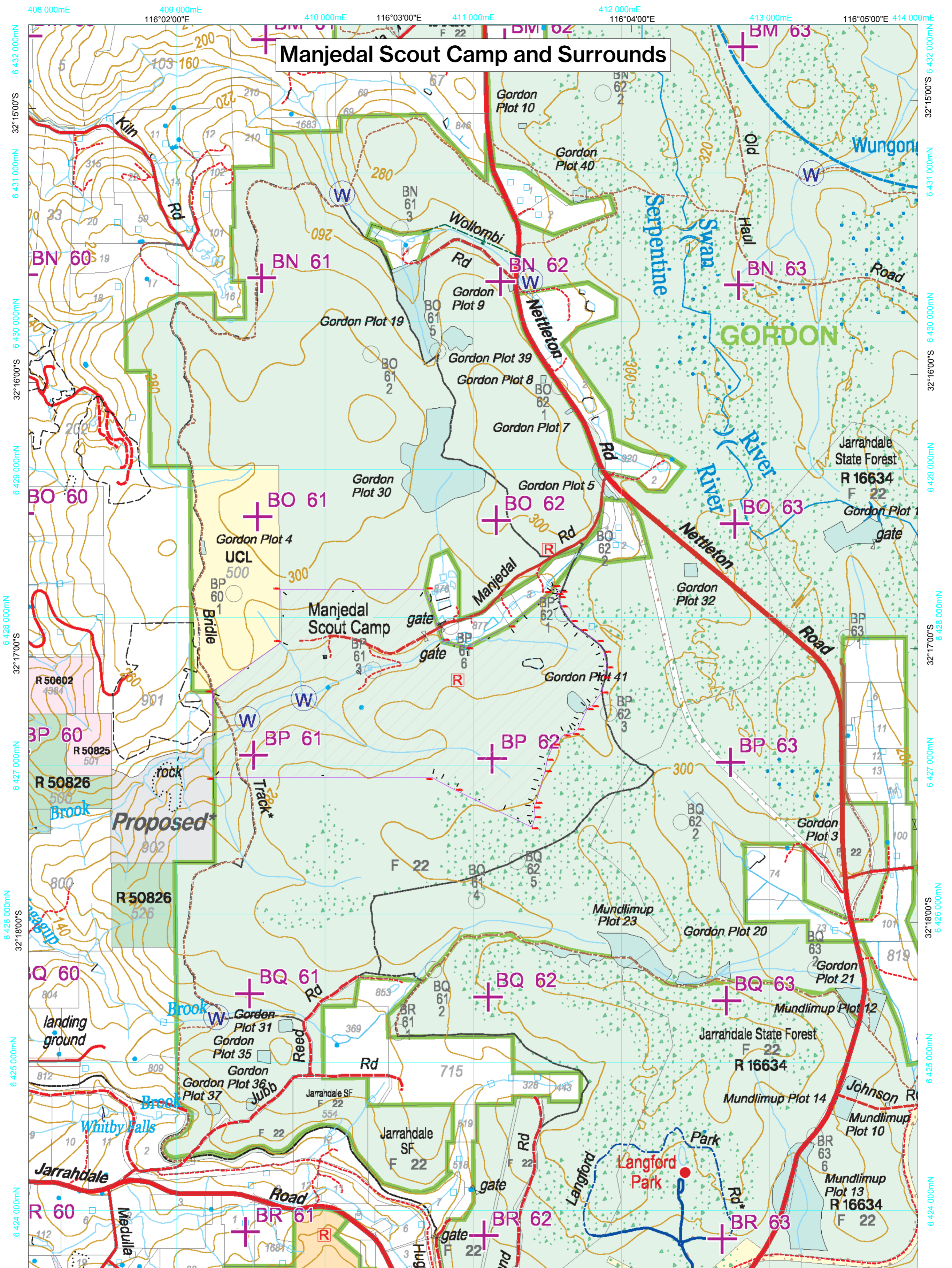


Manjedal Scout Camp and Surrounds



To Determine an MGA Map Reference

To give a standard reference on this map sheet to the nearest 100 metres

Sample Point: Long trail shelter (see point opposite)

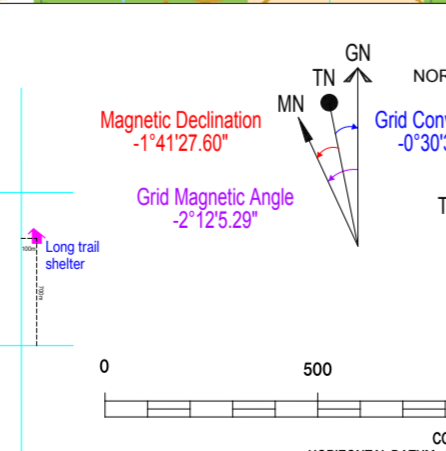
A. Easting
 1. Locate the first VERTICAL grid line to LEFT of the point and read the figures labelling the line in the top or bottom margin.
 2. Estimate tenths from grid line to point.

B. Northing
 3. Locate the first HORIZONTAL grid line BELOW the point and read the figures labelling the line in either the left or right margin.
 4. Estimate tenths from grid line to point.

Sample Point Reference: 431 387

Note: 1. Before giving a grid reference, the name and number of the map sheet should be stated.
 2. Eastings are always stated first, and
 3. Always quote the UTM zone.

Full Reference of Sample Point: 343300mE, 6235700mN



SCALE 1: 25 000

CONTOUR INTERVAL 20 METRES

HORIZONTAL DATUM: GEOCENTRIC DATUM OF AUSTRALIA 1994 (GDA94)

PROJECTION: MAP GRID OF AUSTRALIA ZONE 50 (MGA 250)

Produced by Geographic Information Services Unit
 Department of Biodiversity, Conservation and Attractions
 Job Reference: 24072018TM (July 2018)

LEGEND

- Scout Lease
 - National park
 - State forest
 - Species trial plots
 - Reference tree
 - GORDON
 - Forest block boundary, Name
 - Mined area
 - Rehabilitated mined area
 - Hydro conveyance
 - Quarry
 - Permanent water point
 - Contour
 - Public access roads (not managed by Parks and Wildlife Service)
 - assessed
 - unassessed
 - National/State highway, freeway
 - Major road
 - Minor road**
 - Track**
 - Parks and Wildlife Service designated public access
 - assessed
 - unassessed
 - 1A - major road (all-weather access)
 - 1B - secondary road (all-weather access)
 - 1C - minor road (all-weather access)
 - 1D - internal access (condition variable)
 - 1E - track (4x4)
 - Parks and Wildlife operational roads (includes roads managed outside Parks and Wildlife Service managed lands)**
 - assessed
 - unassessed
 - 2A/6A - major road (all-weather access)
 - 2B/6B - secondary road (all-weather access)
 - 2C/6C - minor road (all-weather access)
 - 2D/6D - internal access (condition variable)
 - 2E/6E - track (4x4)
- ** In some cases these roads may be restricted access and are not displayed on the map.
- Cartographic theme based on the Conservation Operations Graphic (COG) map series, 2018